

NEXiCONNector

User Manual

Table of Contents

Introduction	2
AI Pixel+ Setting.....	3
AIPP Advance Setting	4
Save Customized Picture Quality Setting	5
Load Customized Picture Quality Setting.....	7
Delete Customized Picture Quality Setting.....	10
Reset Settings.....	12
Record/Streaming	13
Audio Mixer.....	19
How to live stream on YouTube	20
How to live stream on Facebook.....	25
How to live stream on Twitch	28
How to live stream on Steam.....	33



Introduction

Welcome to the NEXiCONNector User Guide

Brought to you by [NEXiCONN Technology Corp.](#), this guide details the functionalities and operations of the NEXiCONNector application in conjunction with our advanced capture devices, the NV601 and NV501.

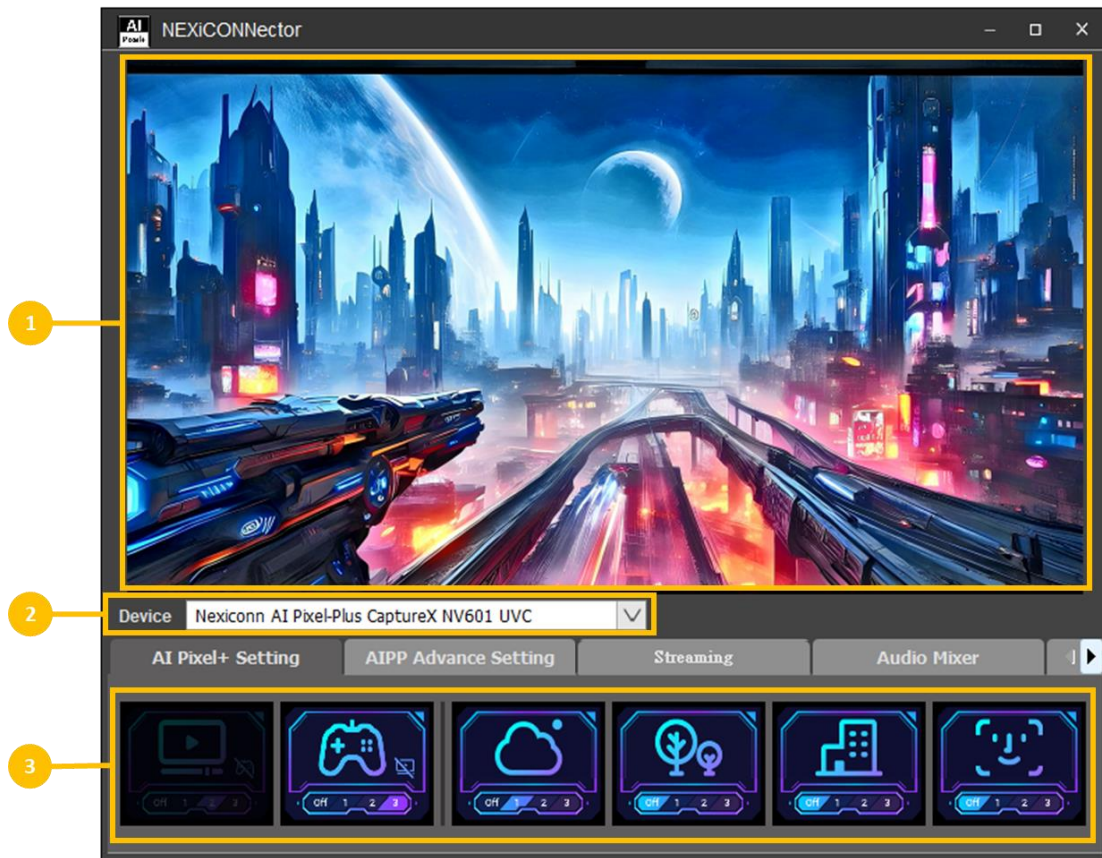
Capabilities of NEXiCONNector with NV601/NV501:

- Configure AI Pixel+ settings directly through your PC.
- Customize and apply your own AI Pixel+ settings directly to NV601/NV501.
- Record HDMI inputs at resolutions up to **4K144**.
- Stream simultaneously to up to **4** platforms.

Our Commitment: At [NEXiCONN Technology Corp.](#), we value your decision to use our products. We are committed to delivering an exceptional user experience. Should you have any inquiries or suggestions regarding our products, please feel free to reach out to us.

Thank you for choosing NEXiCONN. Your satisfaction and feedback are instrumental to our continuous improvement.

AI Pixel+Setting



1	Preview window	3	AI Pixel+ settings
2	Connected devices		

Instructions		
3	UI controller	<ul style="list-style-type: none"> Any operation in UI controller needs to sync with NV601/NV501 immediately, and vice versa. Video/Game mode are mutually exclusive <ul style="list-style-type: none"> Video mode selected & Game mode disabled Game mode selected & Video mode disabled Object configurations (Sky, Plant, Building & Face) were disabled when Video/Game mode is in "OFF" level.

AIPP Advance Setting



1	Object selection	4	Load saved picture quality setting
2	Customize picture quality in detail	5	Delete saved picture quality setting
3	Save customized picture quality	6	Reset to original setting

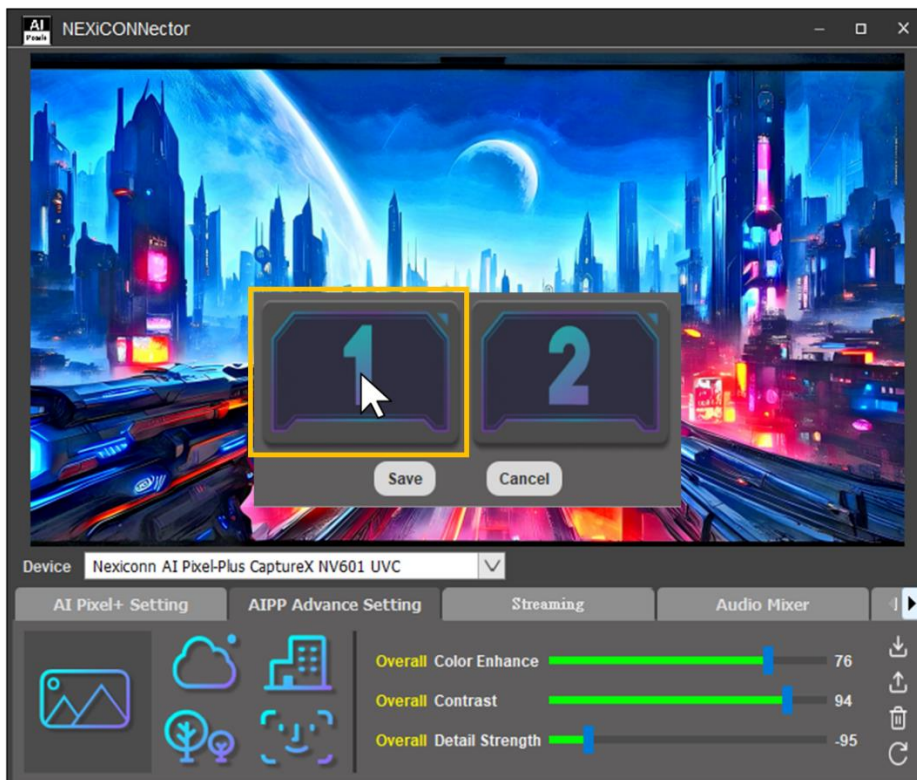
Instructions		
2	Customize picture quality in detail	<ul style="list-style-type: none"> Any change of customized picture quality needs to be sync with NV601/NV501 immediately.

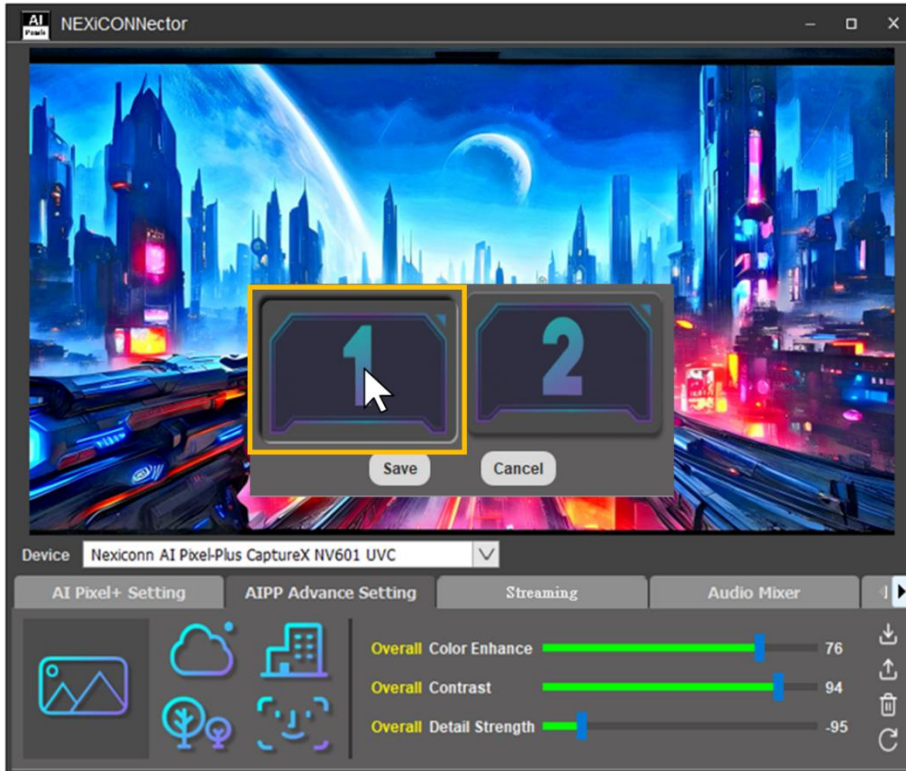
Save Customized Picture Quality Setting

1. Click save button to save the customized picture quality setting



2. Choose the UI to save the customized picture quality setting





3. Click "Save" button to confirm



4. The saved UI can be shown when switching between Video mode/Game mode/Customization mode

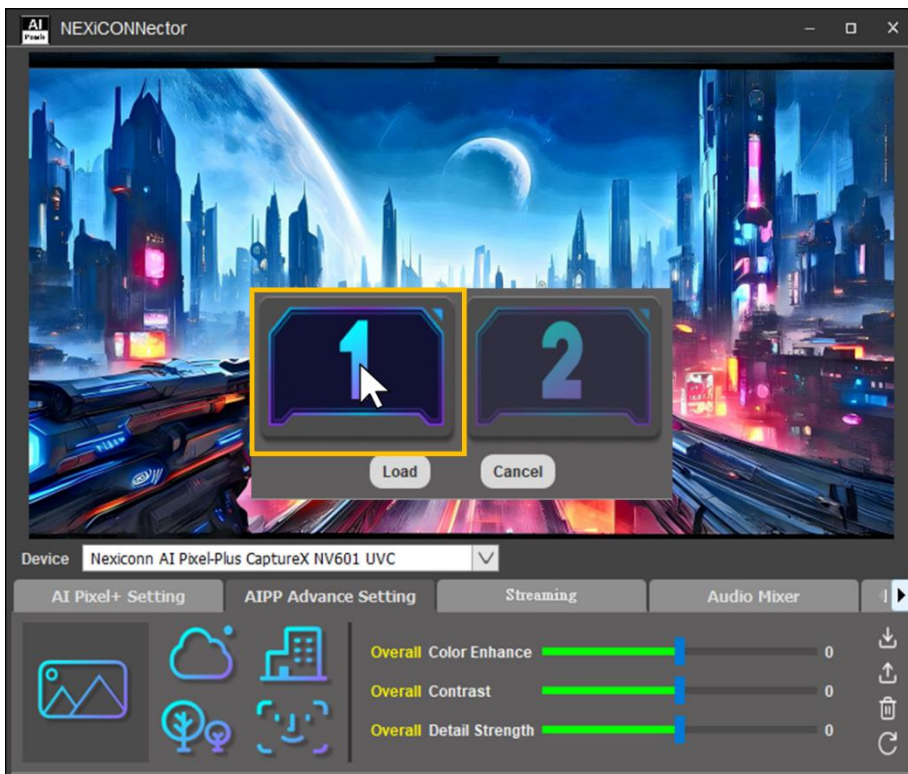


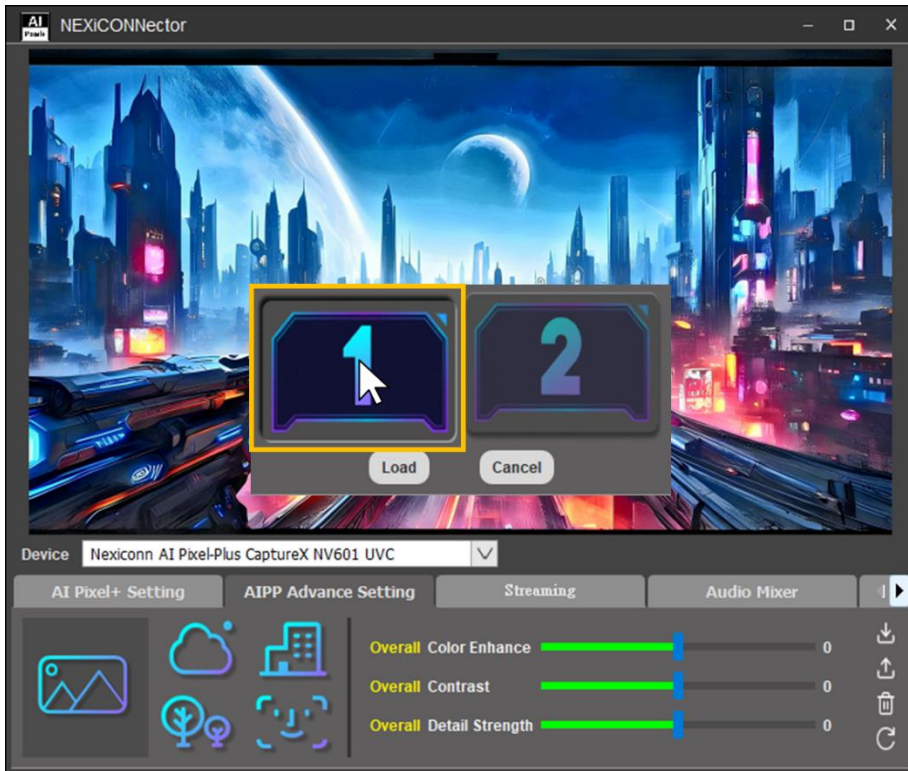
Load Customized Picture Quality Setting

1. Click load button to load the customized picture quality setting

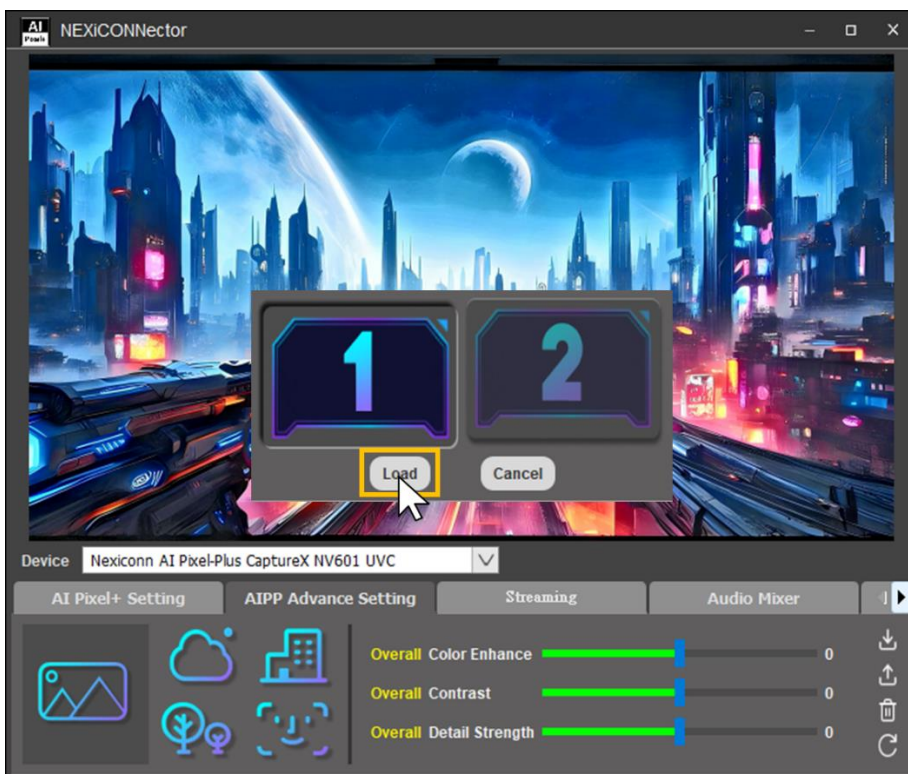


2. Choose the UI to load the customized picture quality setting





3. Click "Load" button to confirm



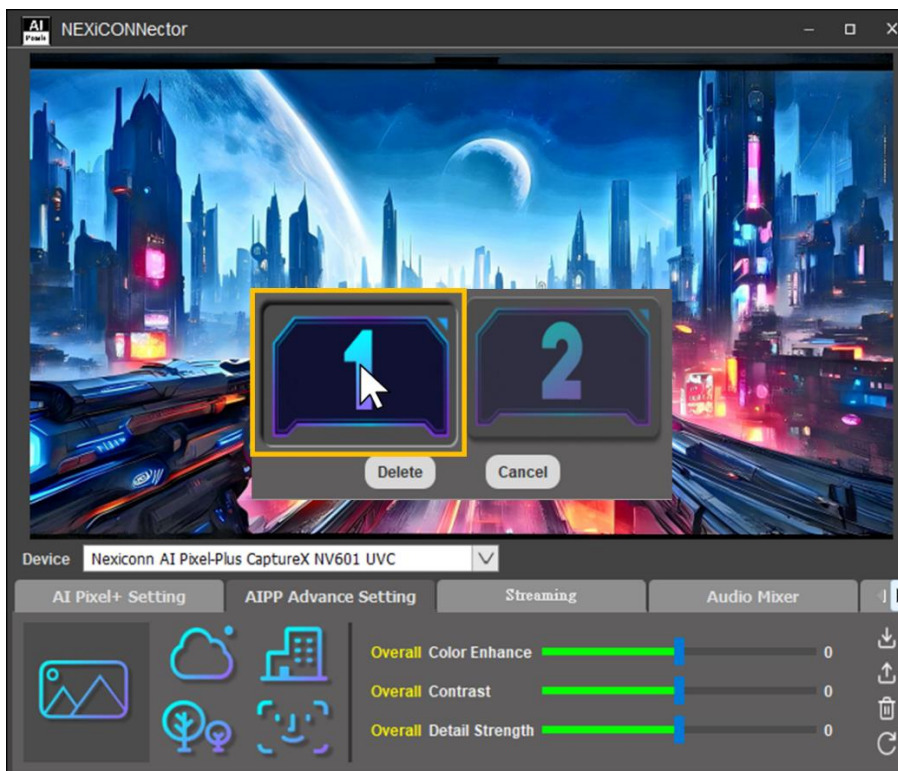
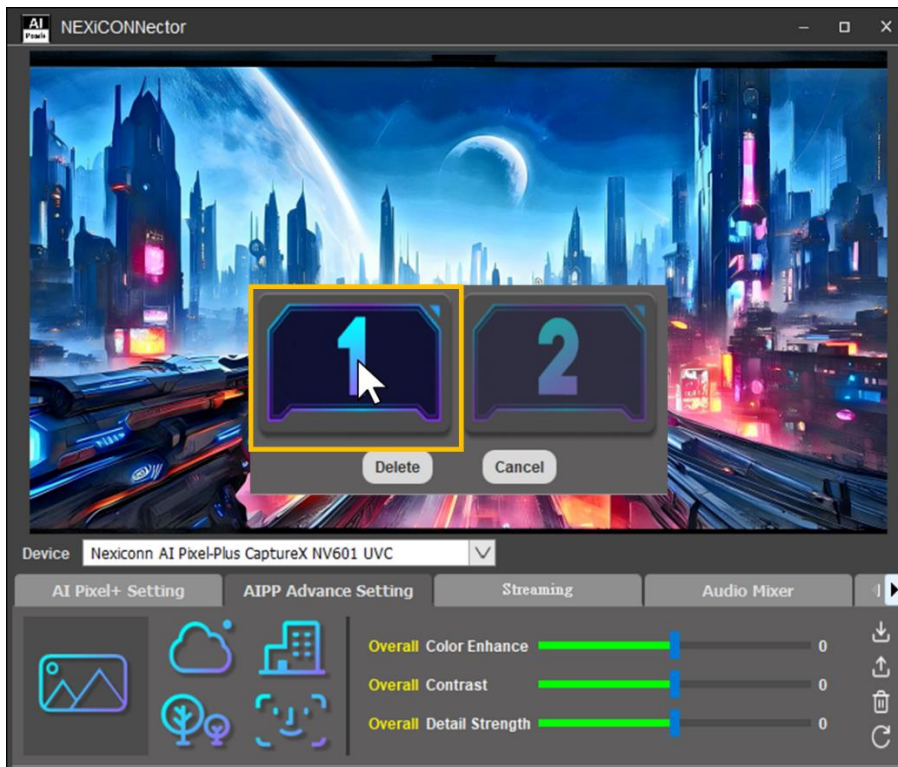


Delete Customized Picture Quality Setting

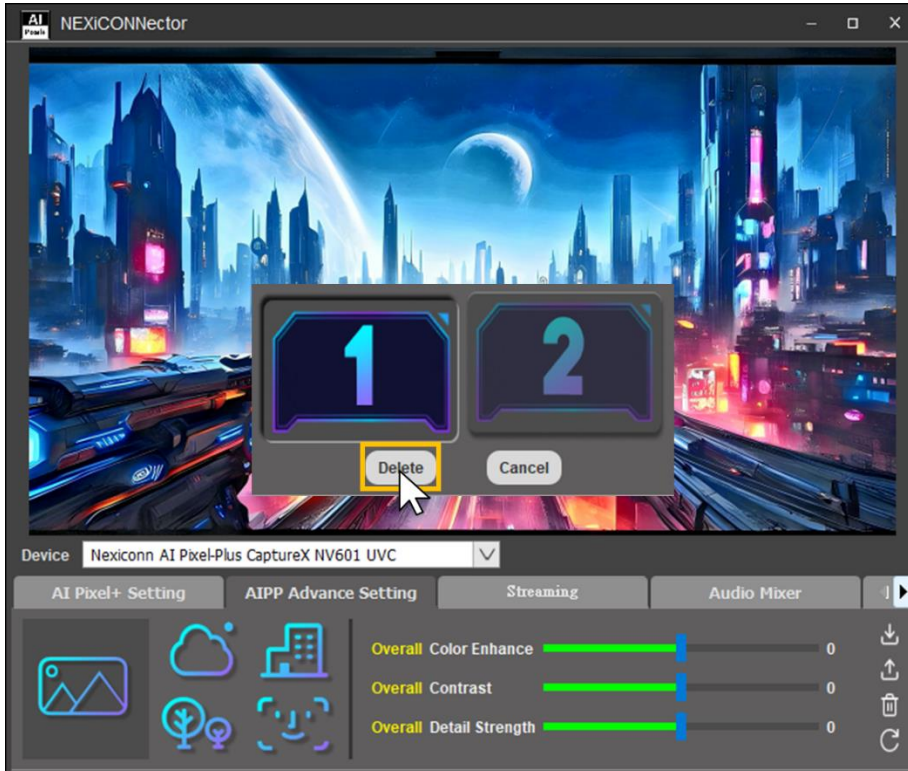
1. Click delete button to delete the customized picture quality setting



2. Choose the UI to delete the customized picture quality setting



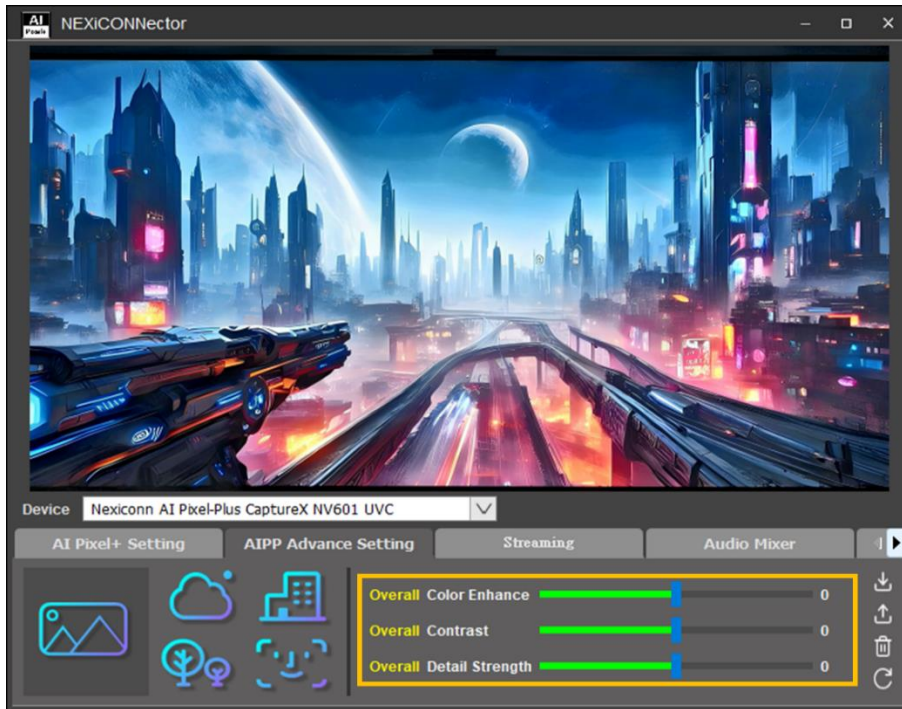
3. Click "Delete" button to confirm



Reset Settings

1. Click reset button to reset the settings to 0

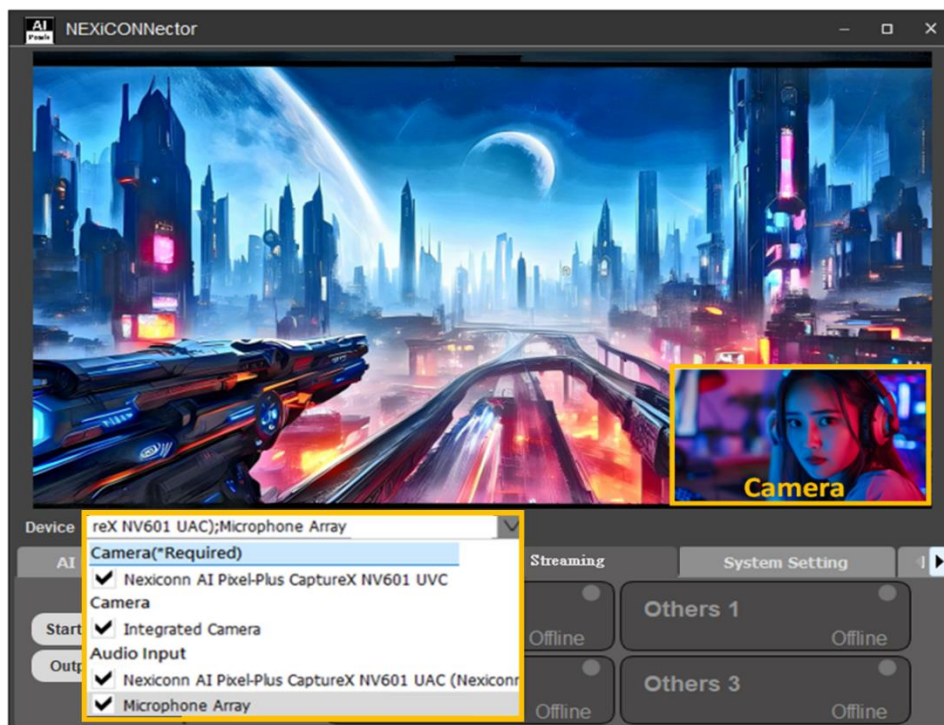




Streaming

How to do streaming

1. Connect your devices, including NV601/NV501, camera...etc, to PC.
2. Add your sources for streaming

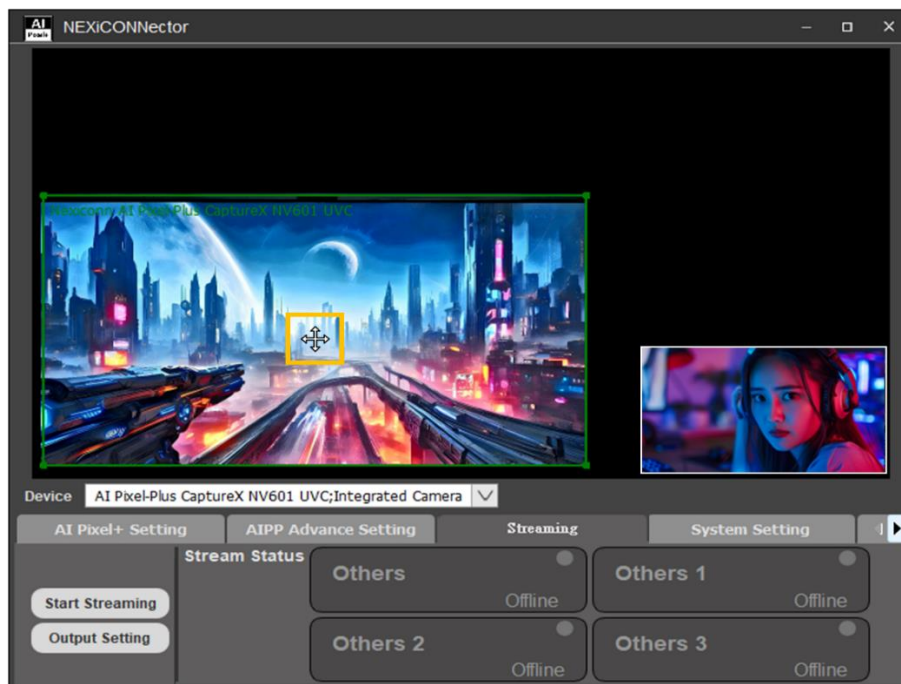
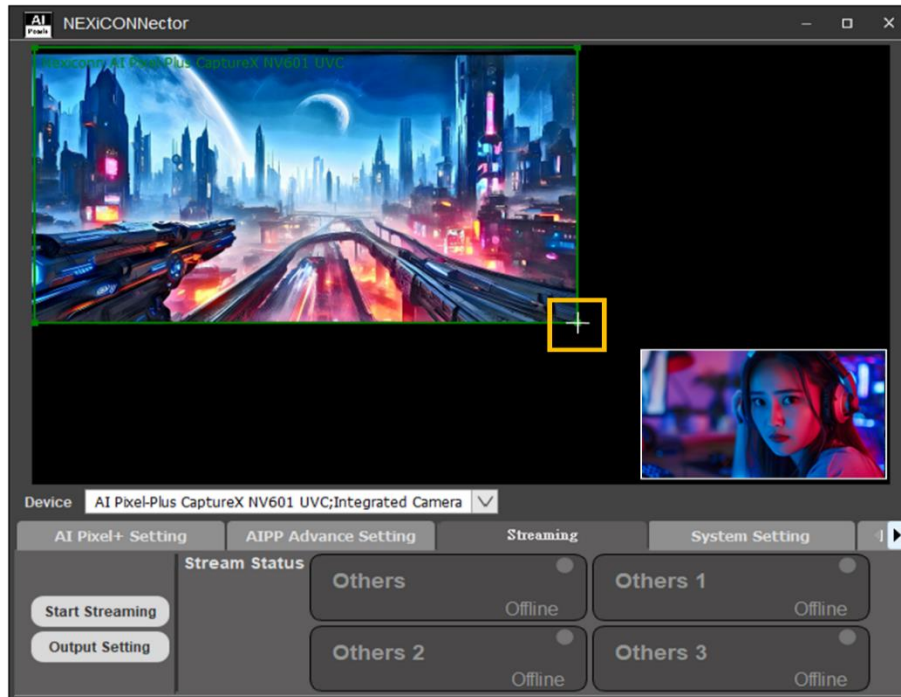


3. Setup preview window.

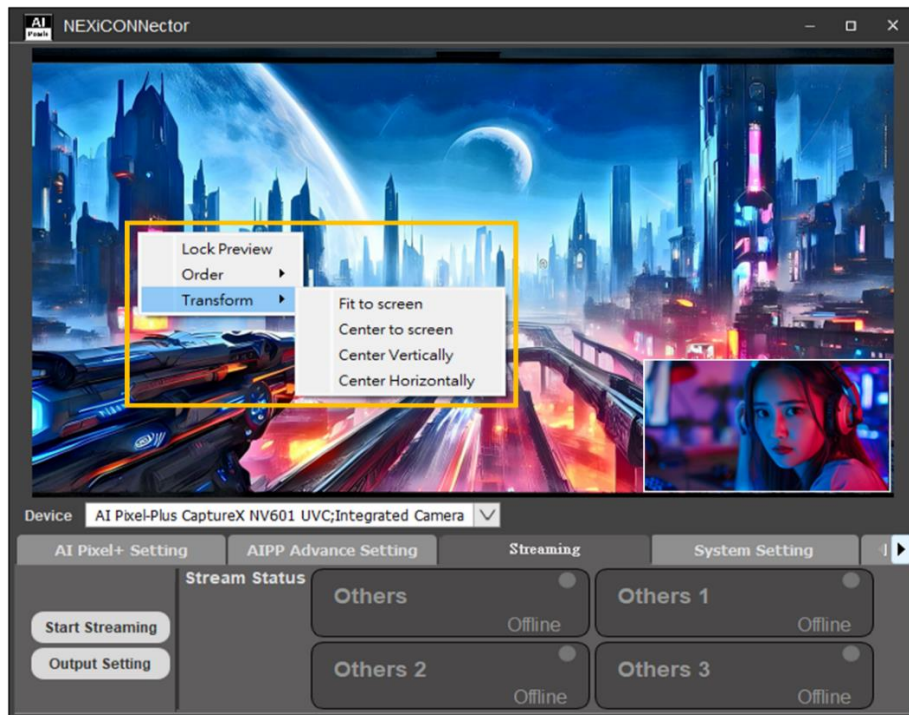
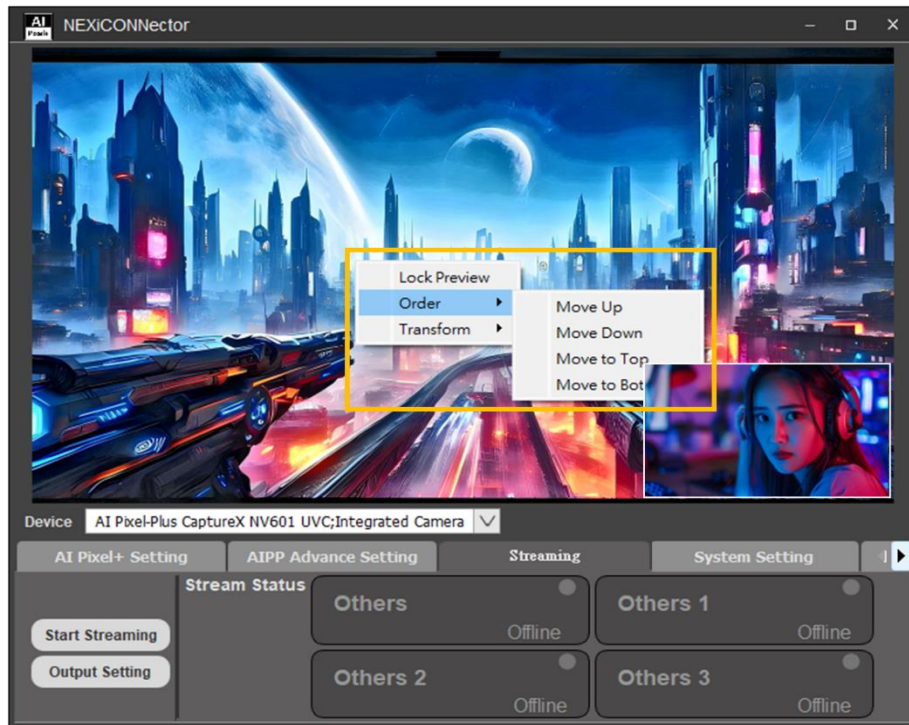
1. Click the source that you would like to setup. When a source is selected, you will see a green box that shows up around it.

2. Resize/relocation

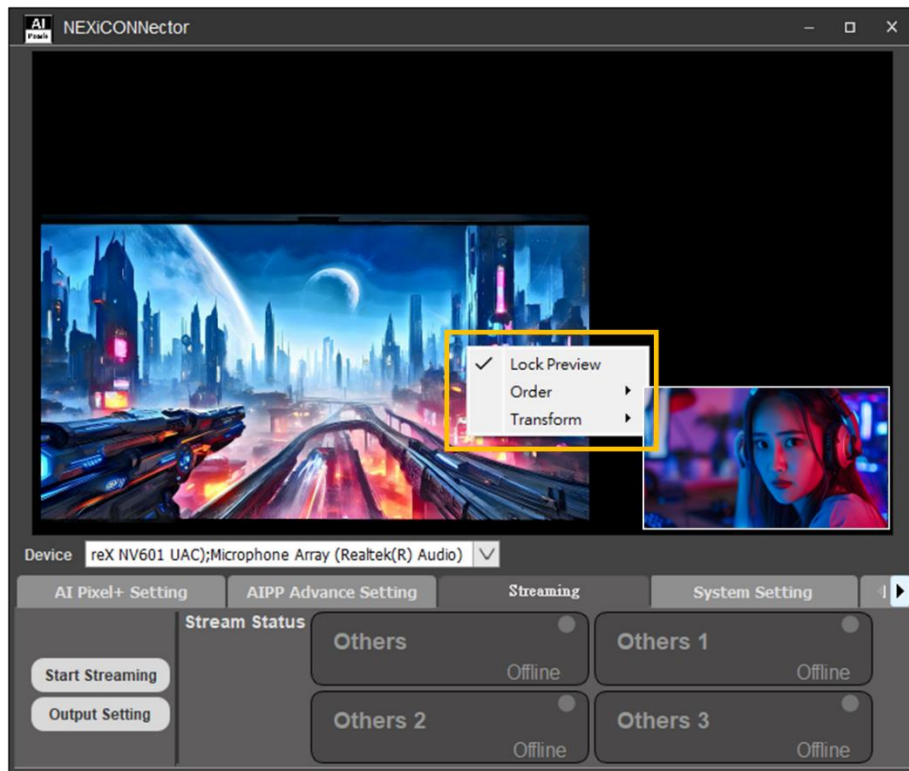
The green bounding box can be used to resize/relocation of the source by drag and drop.



3. You can change the layer order/transform of sources by clicking right button of your mouse.

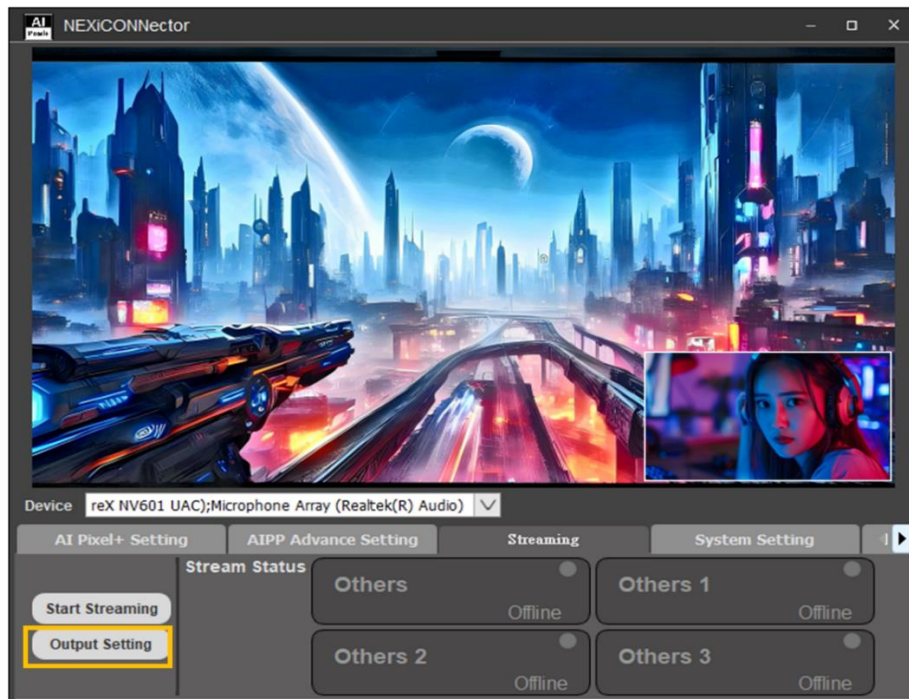


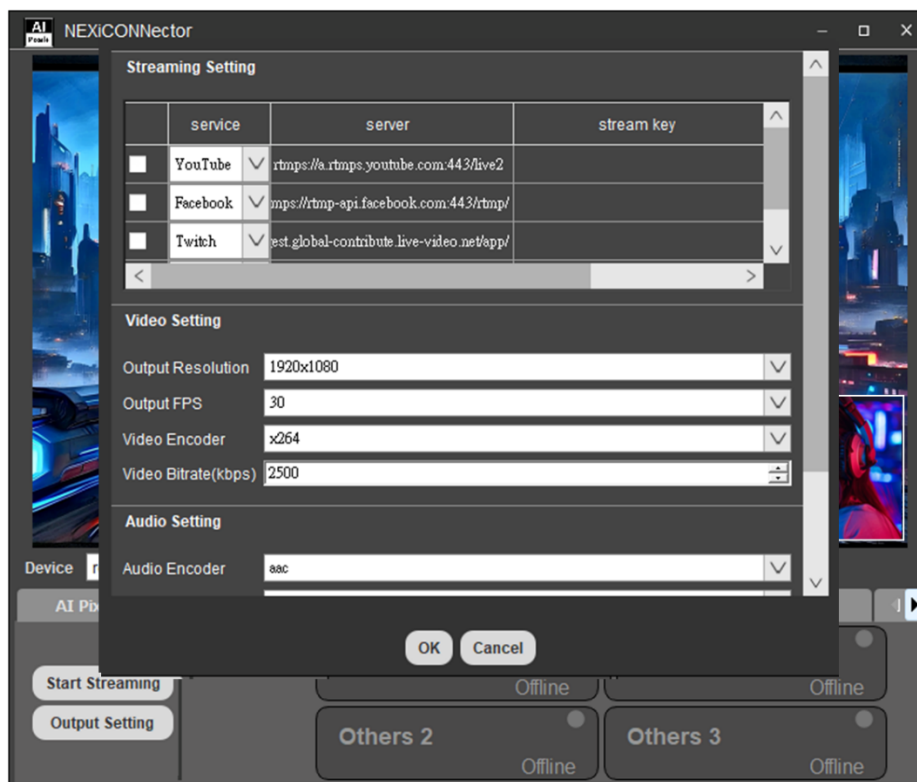
4. Lock Preview by click the “Lock Preview” option.



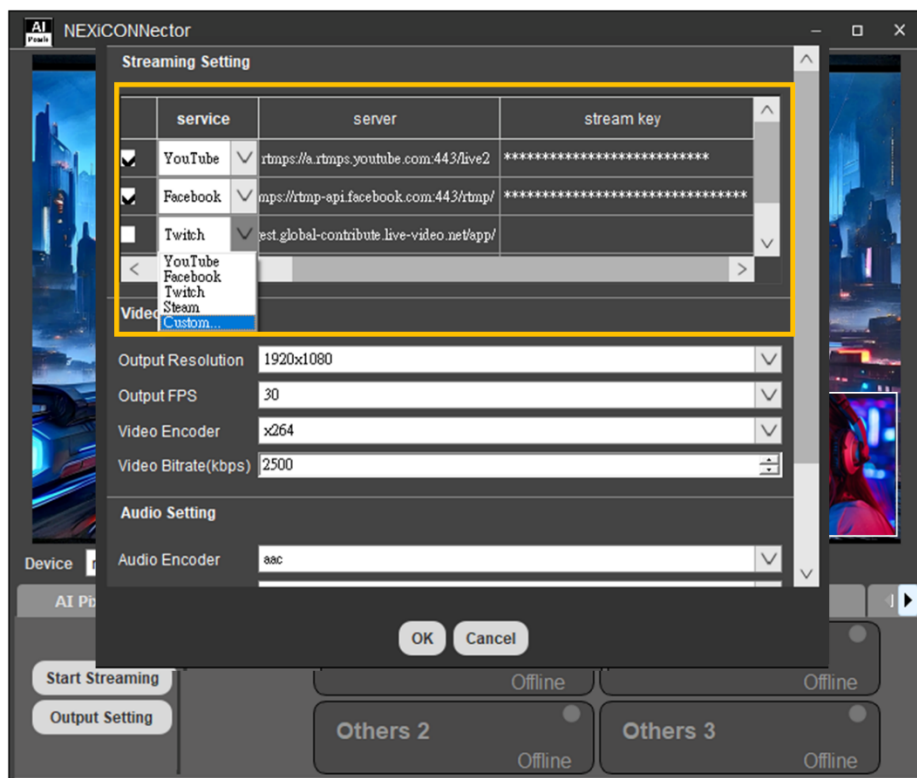
4. Output Setting

1. Click “Output Setting”

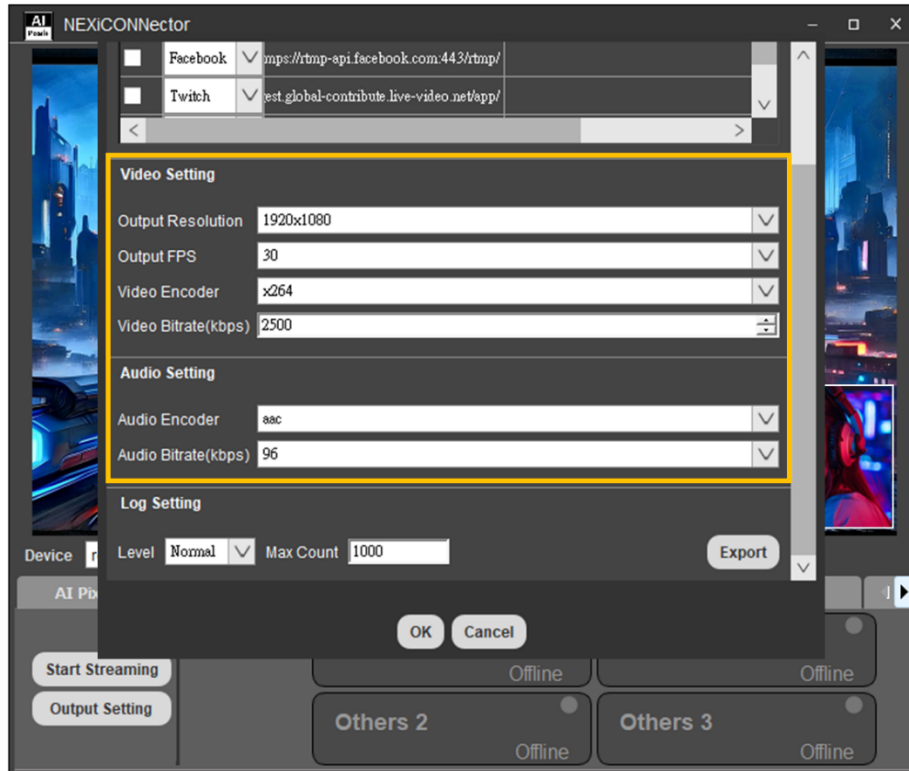




2. Setup the platforms that you would like to streaming to (Up to 4 platformssimultaneously).

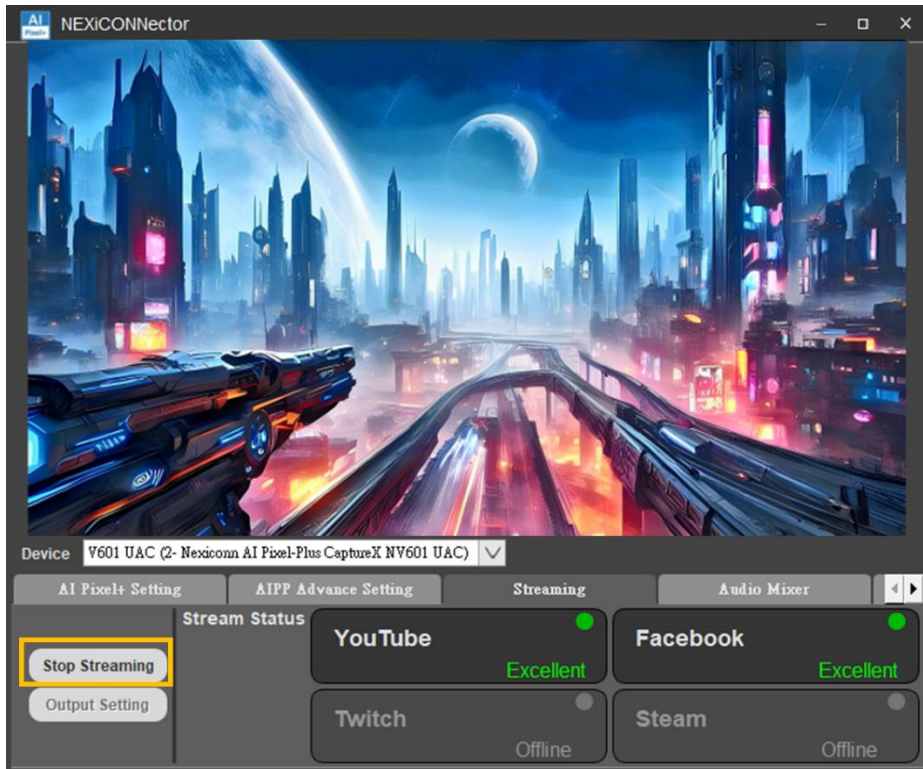


3. Set output video/audio format for streaming.



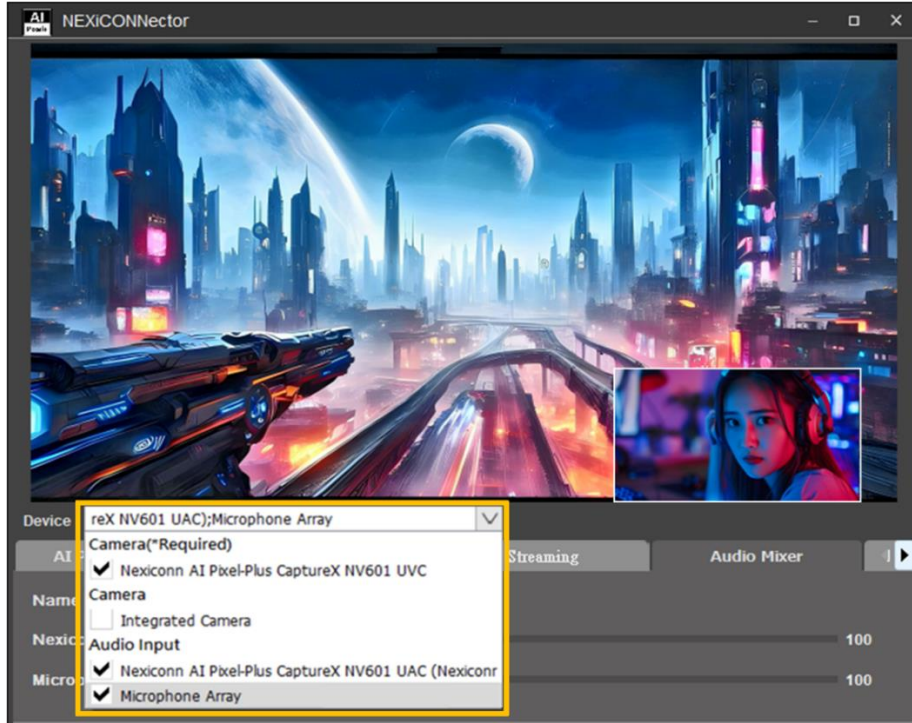
5. Start/Stop Streaming



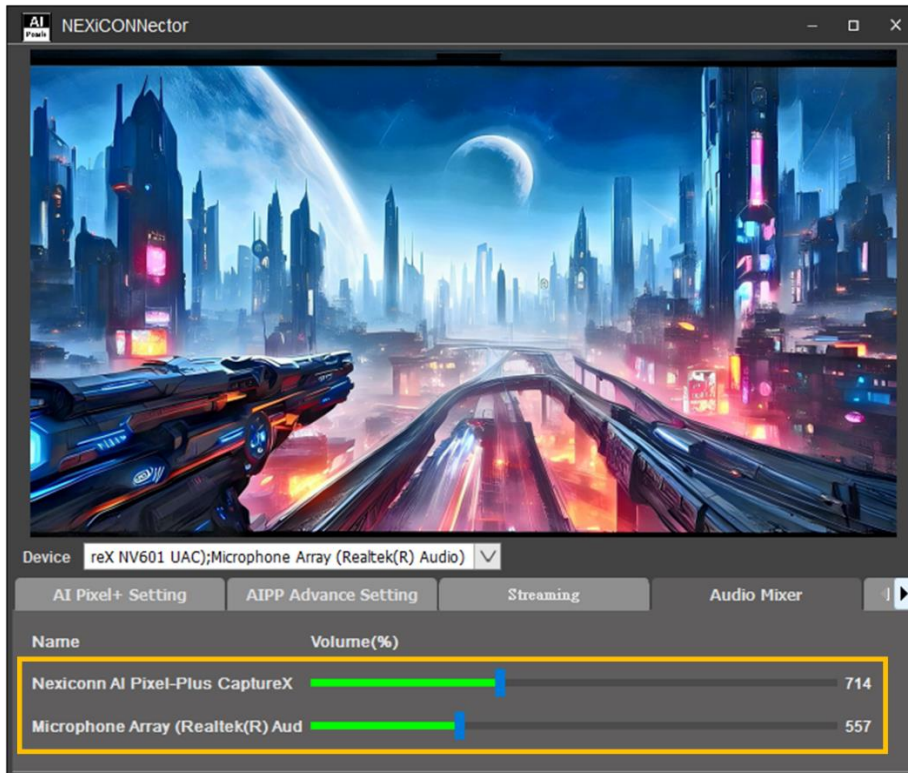


Audio Mixer

1. Add audio inputs from "Device" list



2. Adjust the volume of audio inputs

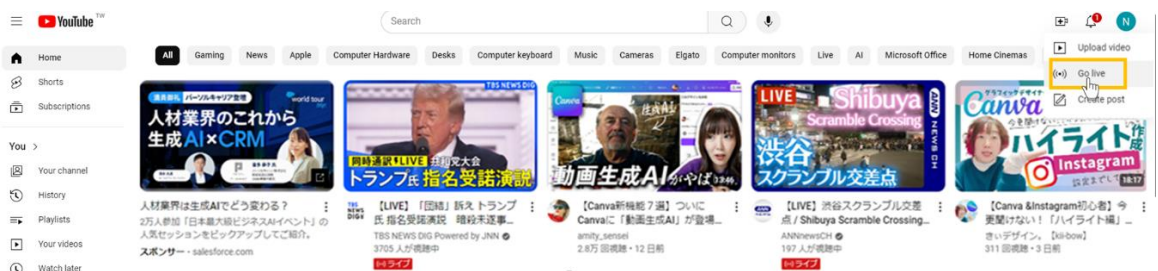


How to live stream on YouTube

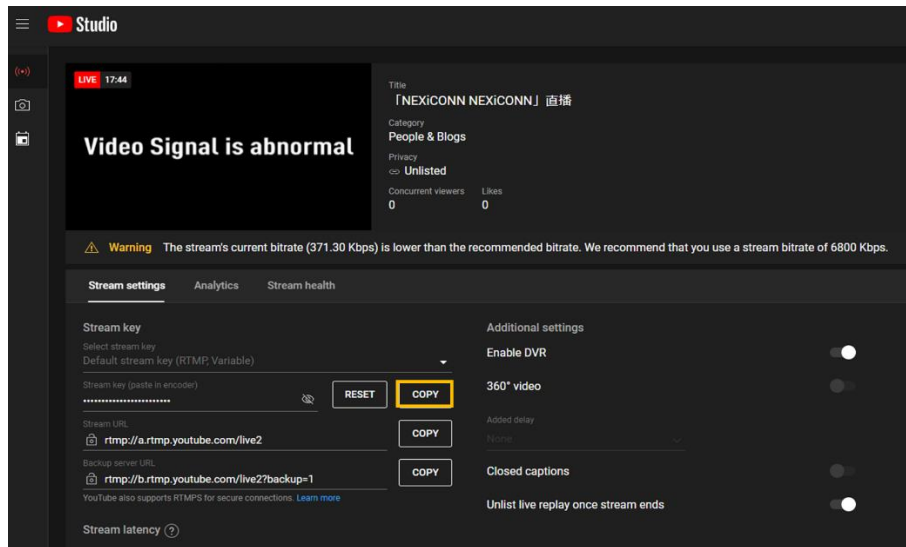
1. Click the "Camera mark" on the top right of the screen.



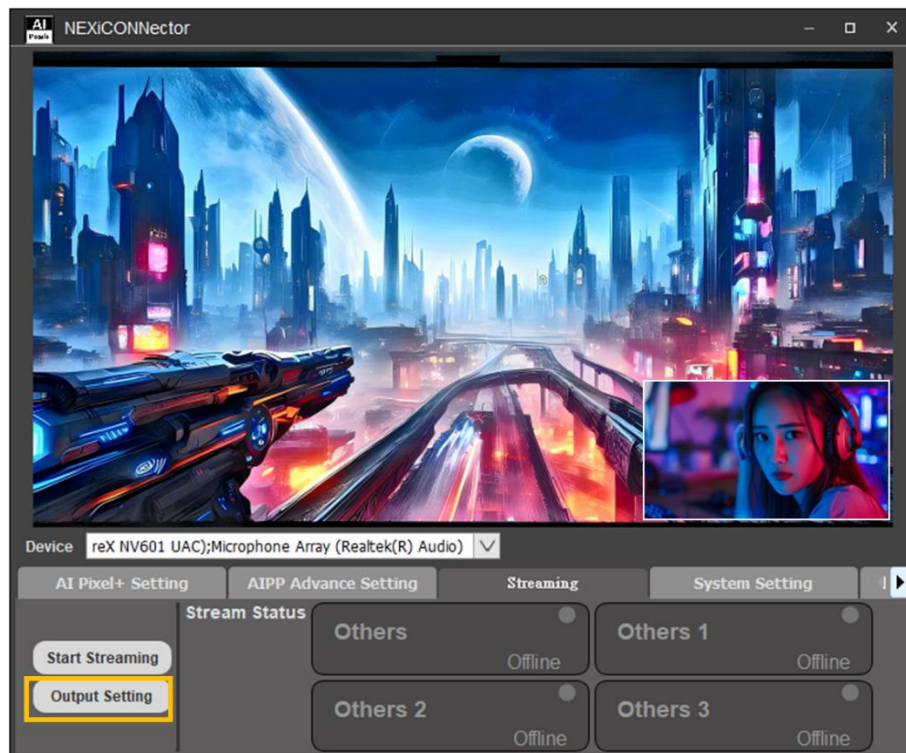
2. Select Go Live



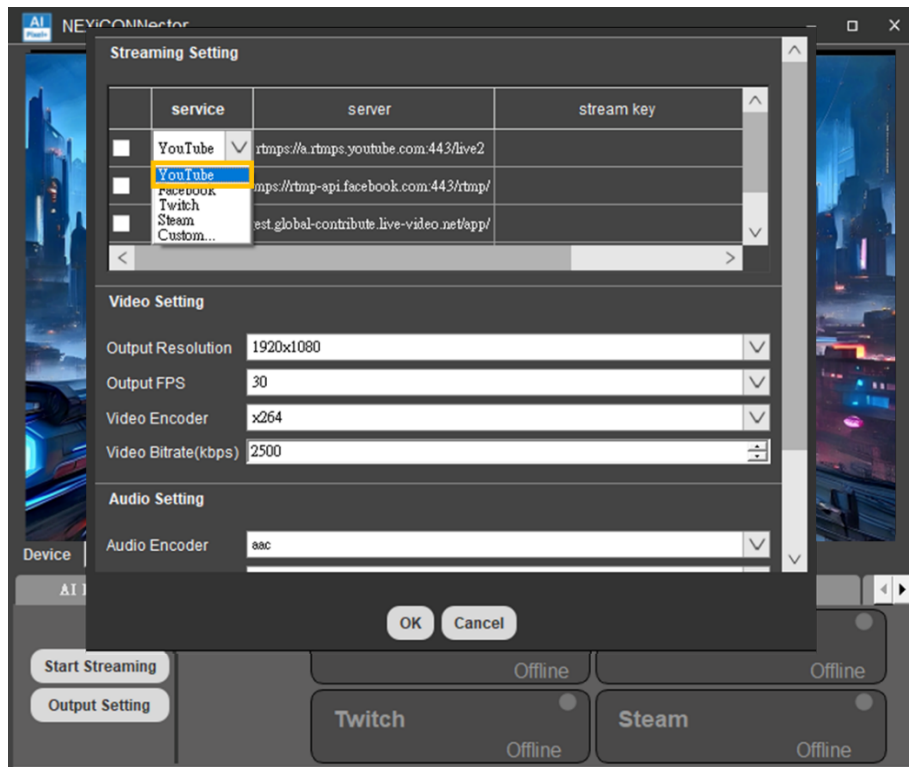
3. Copy the Stream Key



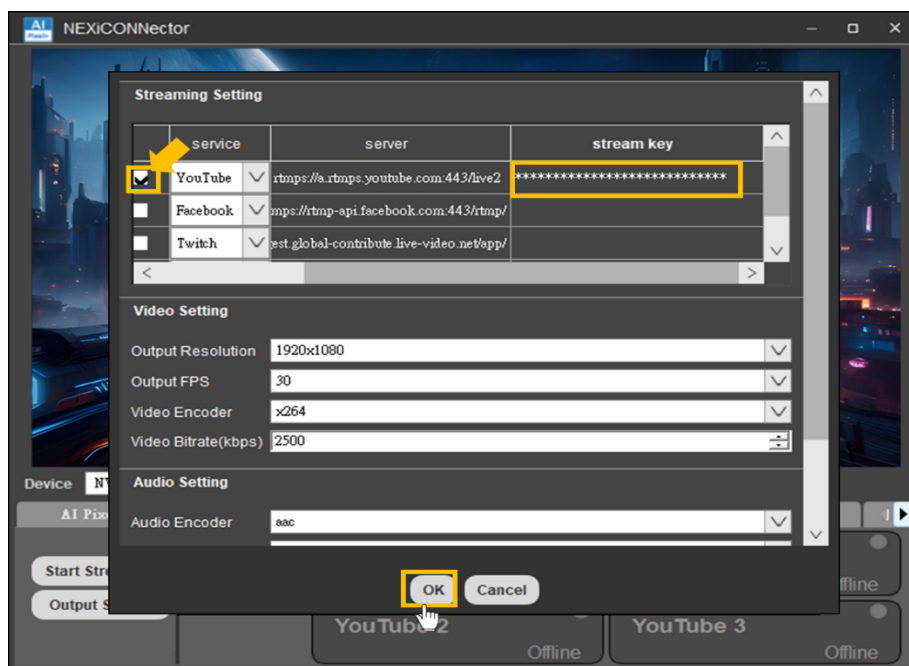
4. Launch NEXiCONNECTor, select the " Streaming" category and click the "Output Settings" button



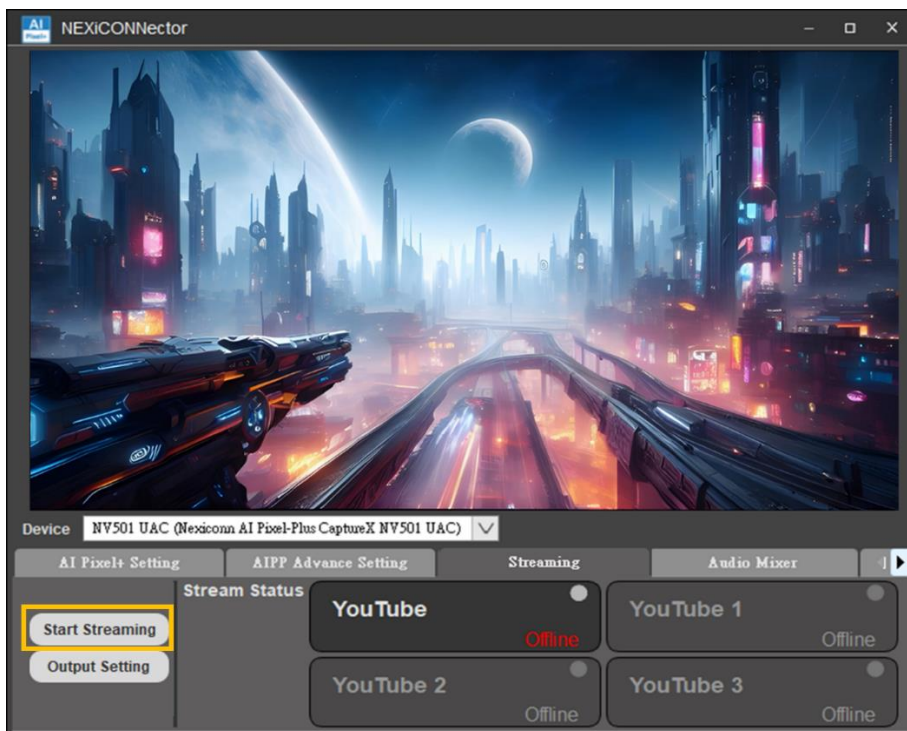
5. Select "YouTube" from the service menu



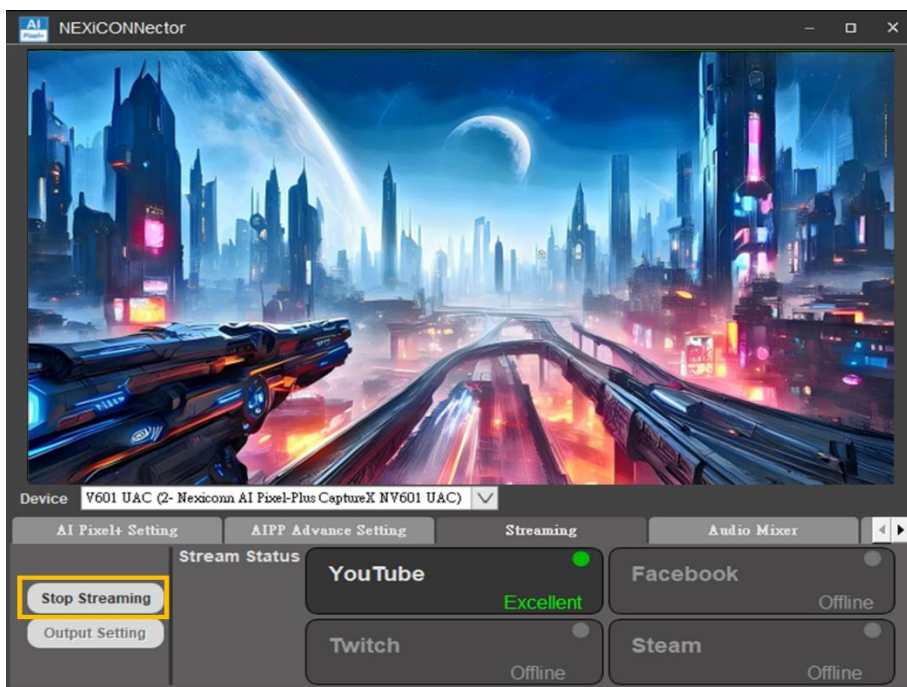
6. Click the box of "service", paste the stream key information you copied earlier and click "OK"



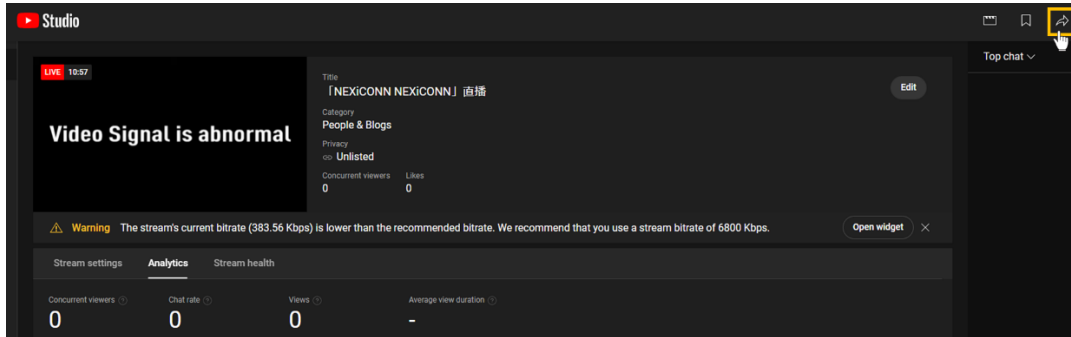
- Click the "Start Streaming" button



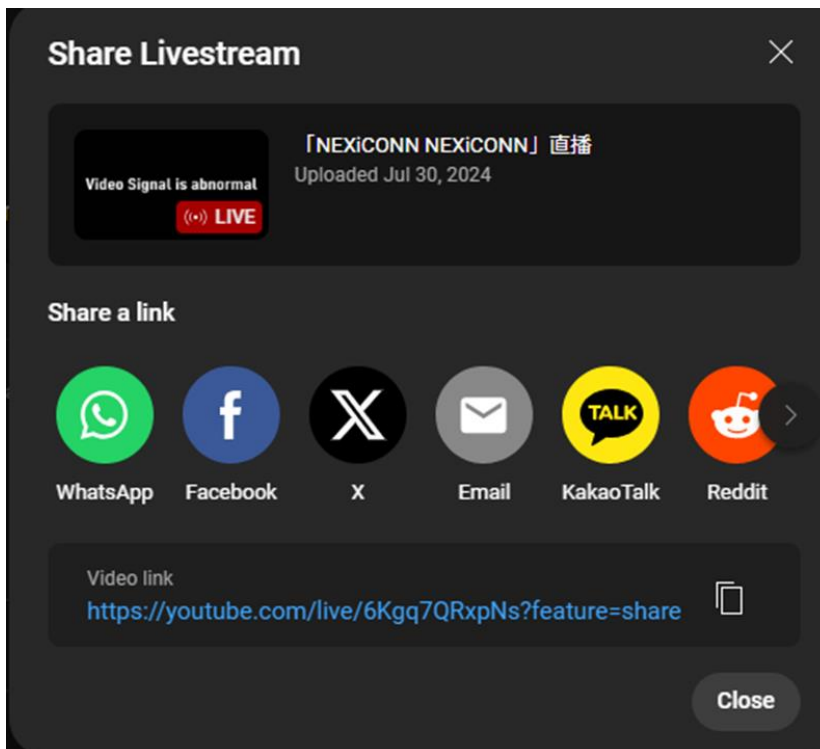
- Click "Stop Streaming" to end your live streaming.



9. If you want to share your live streaming video to others, click on the top right button of the YouTube screen.

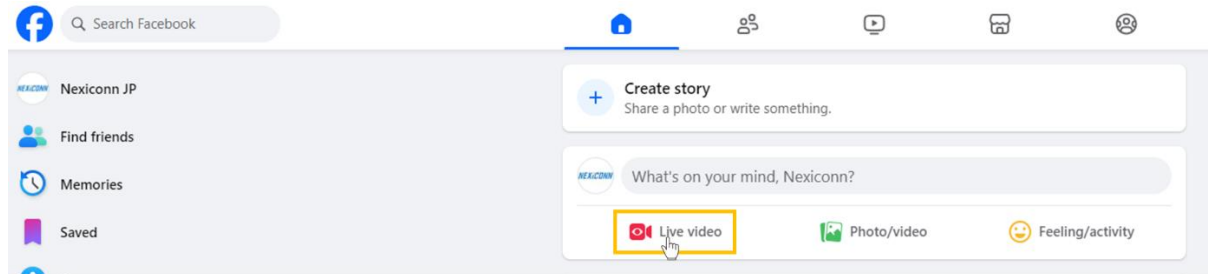


10. An URL of your live streaming video will be displayed. Then, you can share the URL to others.

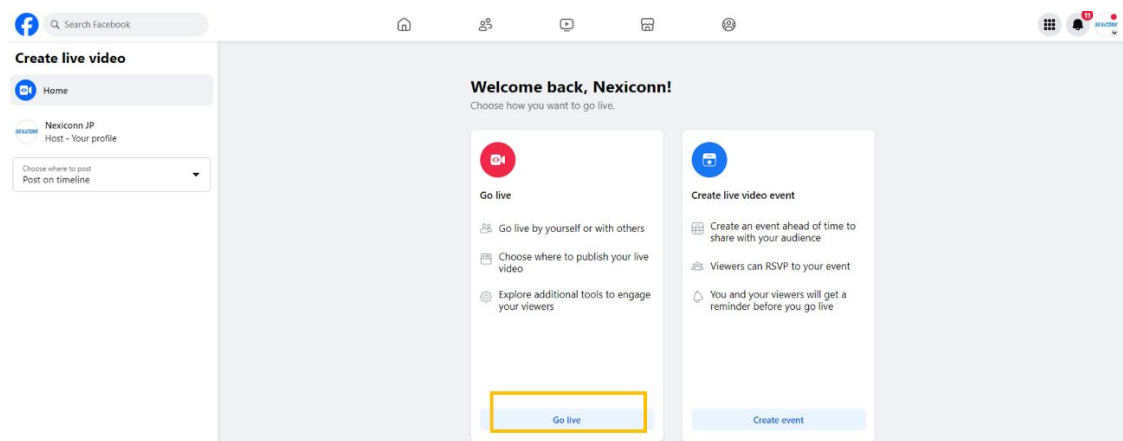


How to live stream on Facebook

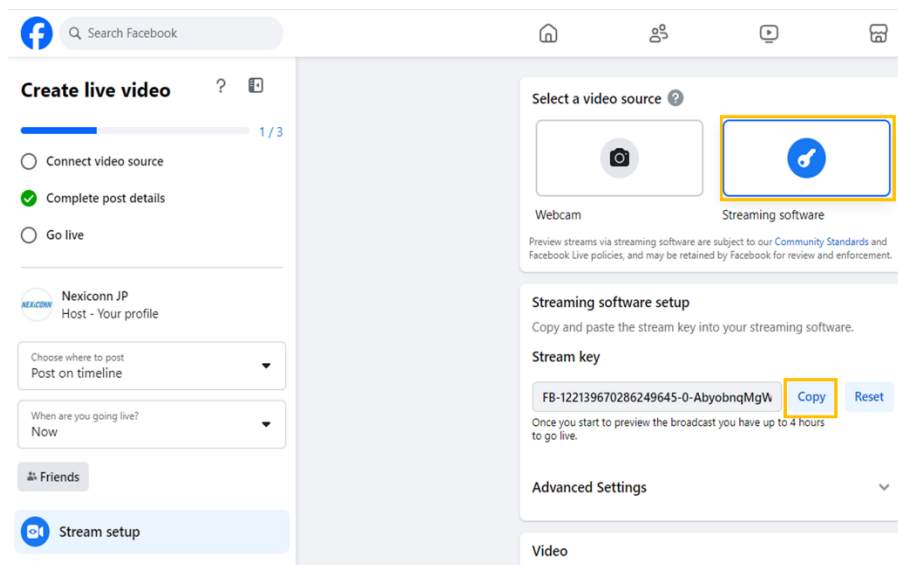
1. Click on "Live Video" on the screen.



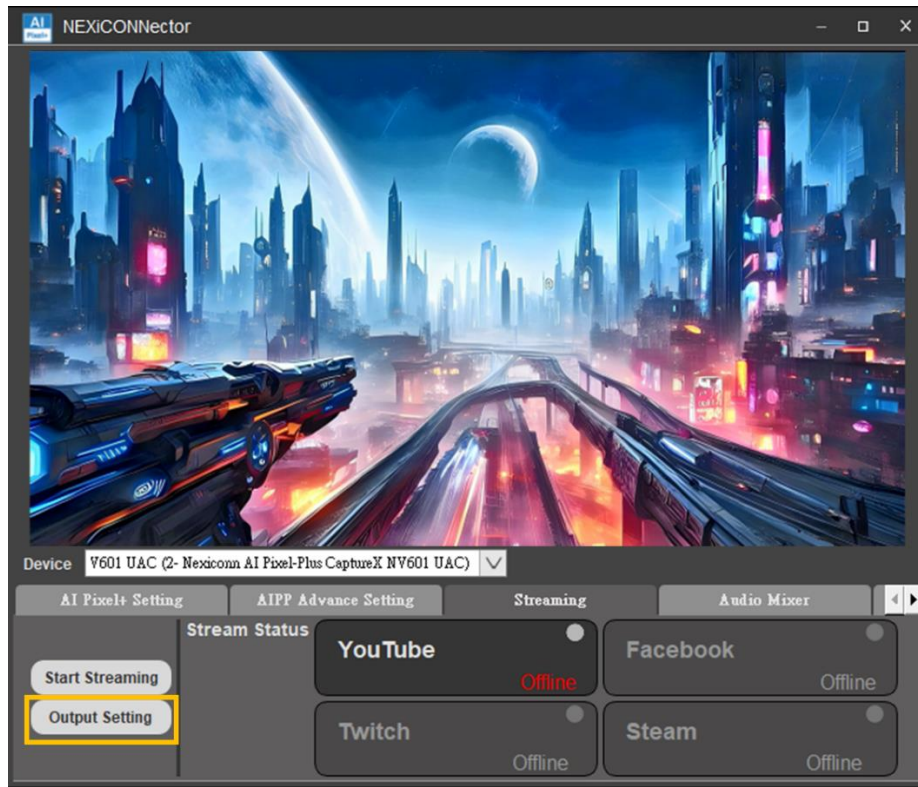
2. Click "Go live".



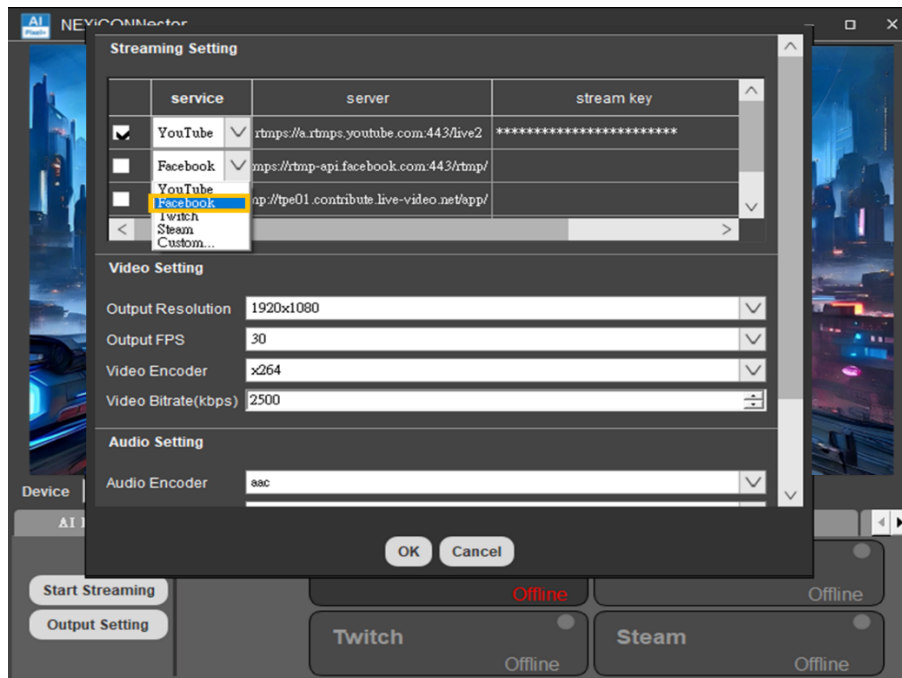
3. Under "Choose your video source", select "Streaming software". Copy the stream key.



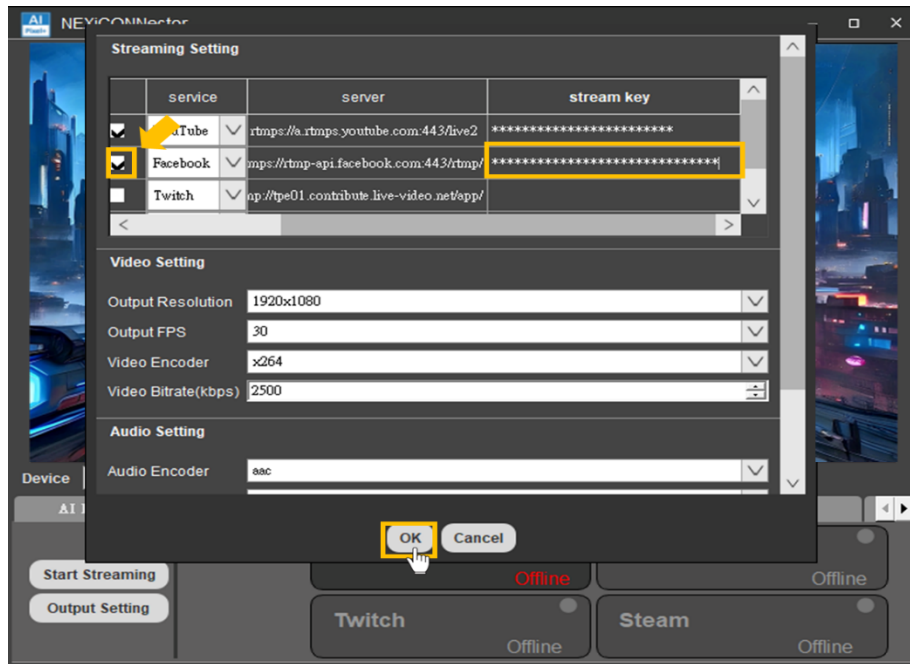
4. Launch NEXiCONNECTor, select the "Streaming" category and click the "Output Settings" button



5. Select "Facebook" from the service list.



6. Click the box of "service", paste the stream key information you copied earlier and click "OK"



1. Click the "Start Streaming" button to start your live streaming.

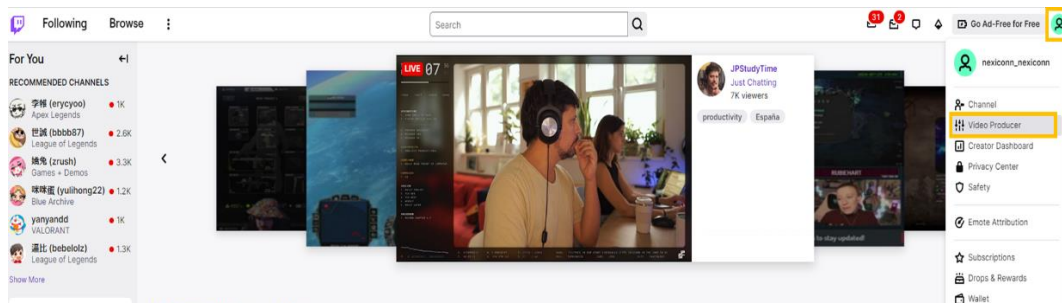


7. Click "Stop Streaming" to end your live streaming.

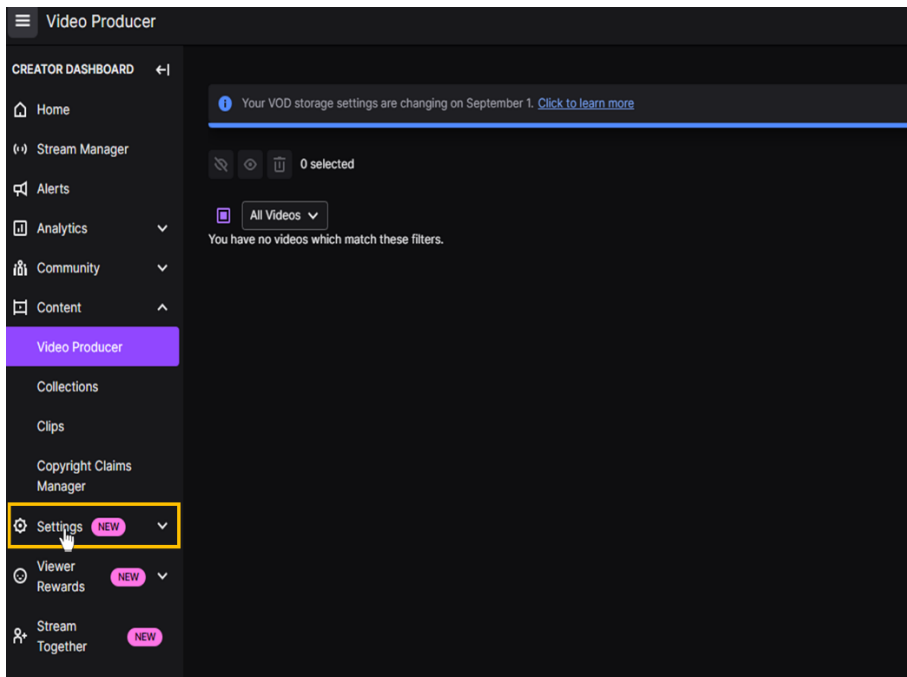


How to live stream on Twitch

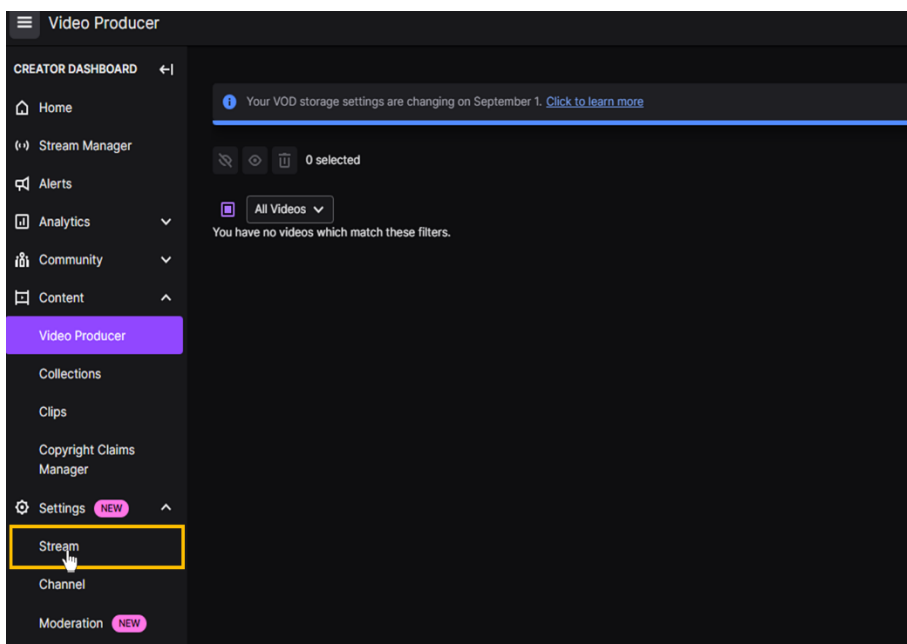
1. Click on the user icon in the top right corner of the screen and select "Video Producer".



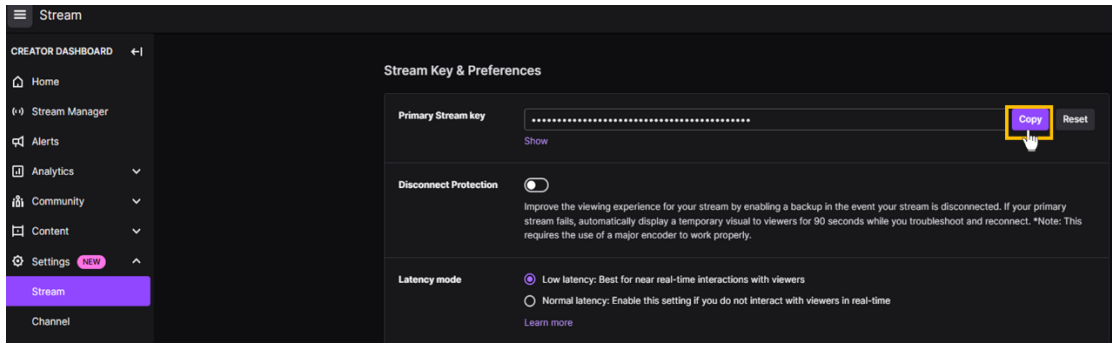
2. Select "Settings" under "Video Producer."



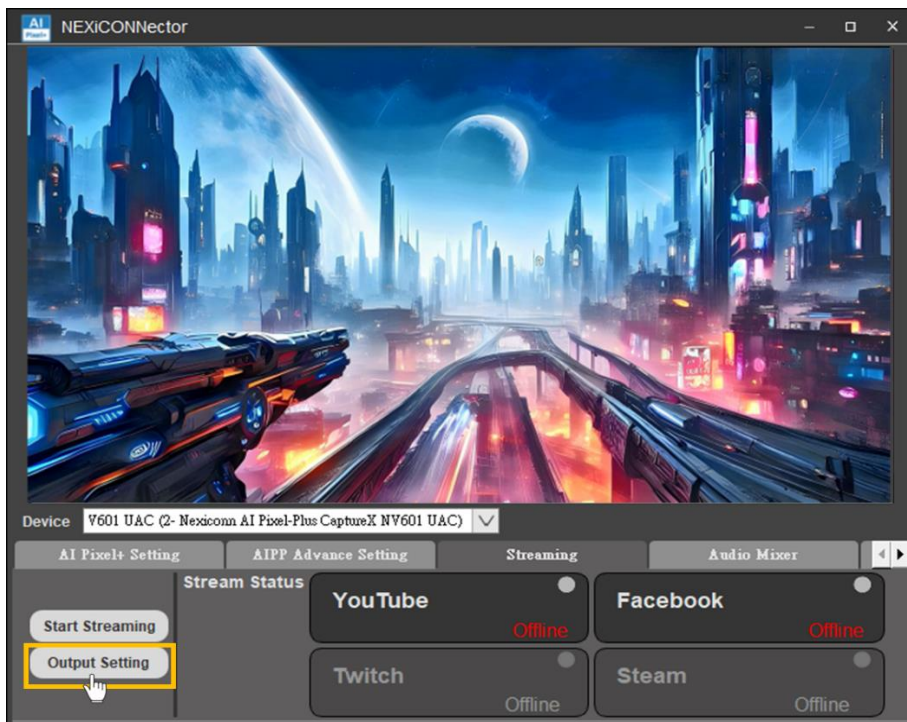
3. From "Settings," click "Streaming."



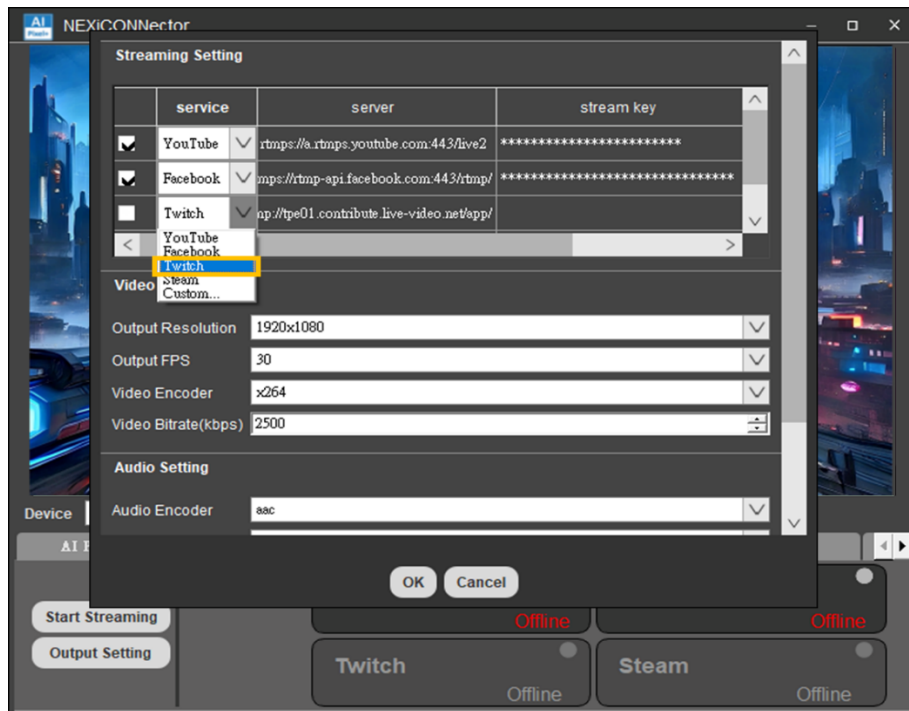
4. Copy your stream key.



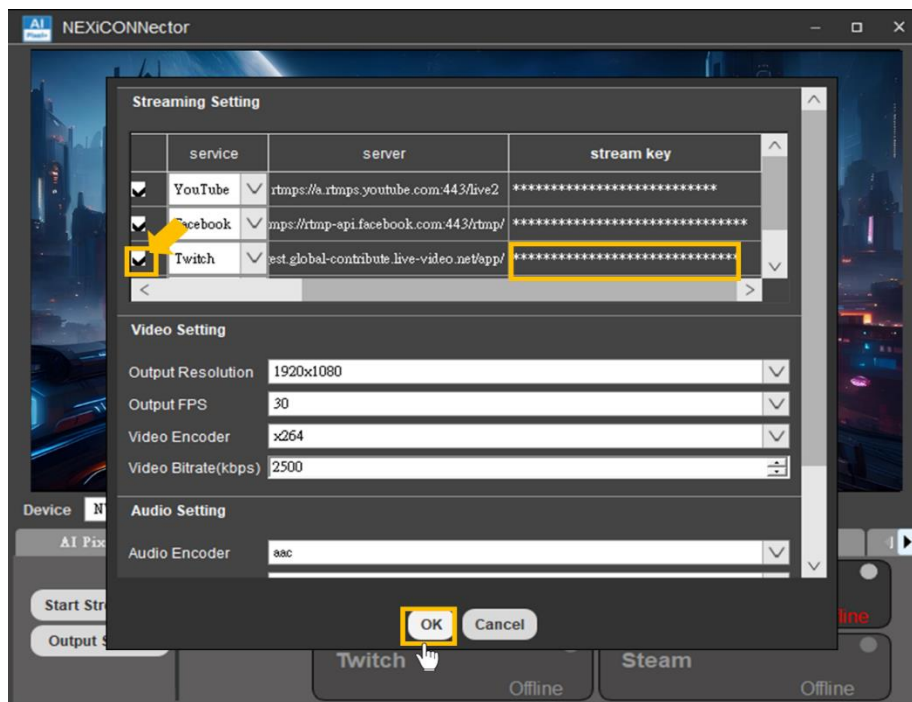
5. Launch NEXiCONNector, select the "Streaming" category and click the "Output Settings" button



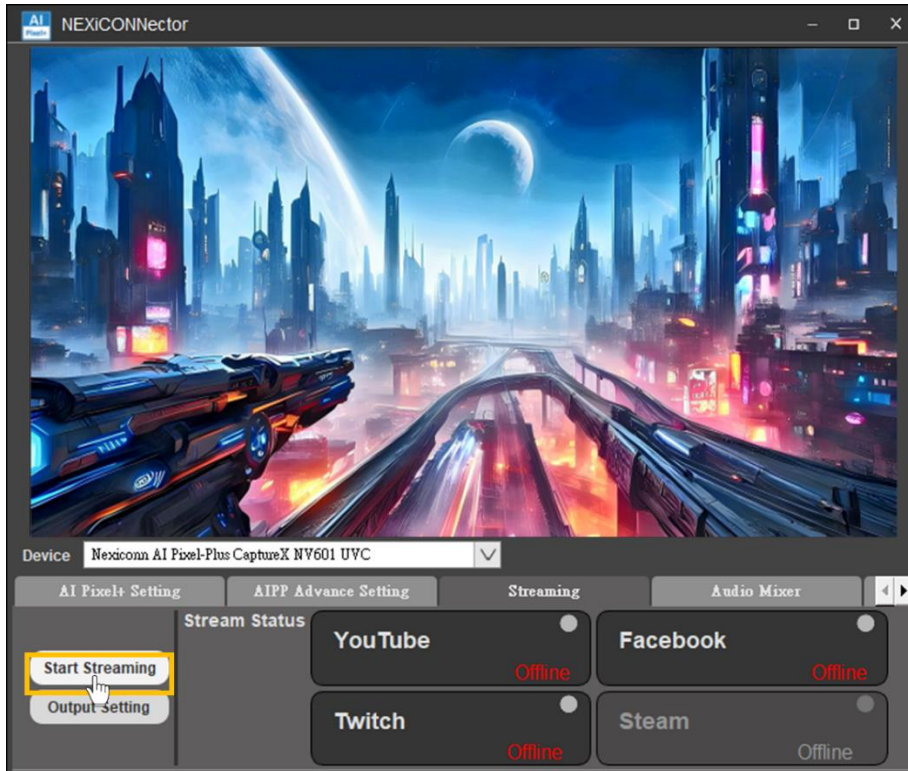
6. Select "Twitch" from the service list.



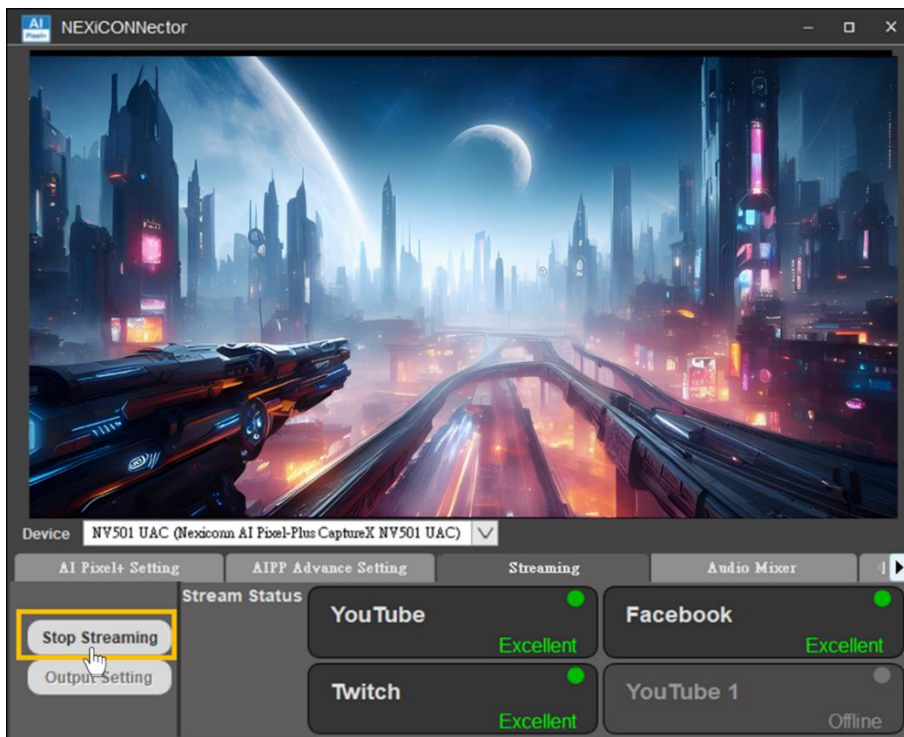
7. Click the box of "service", paste the stream key information you copied earlier and click "OK"



8. Click the "Start Streaming" button to start your live streaming.

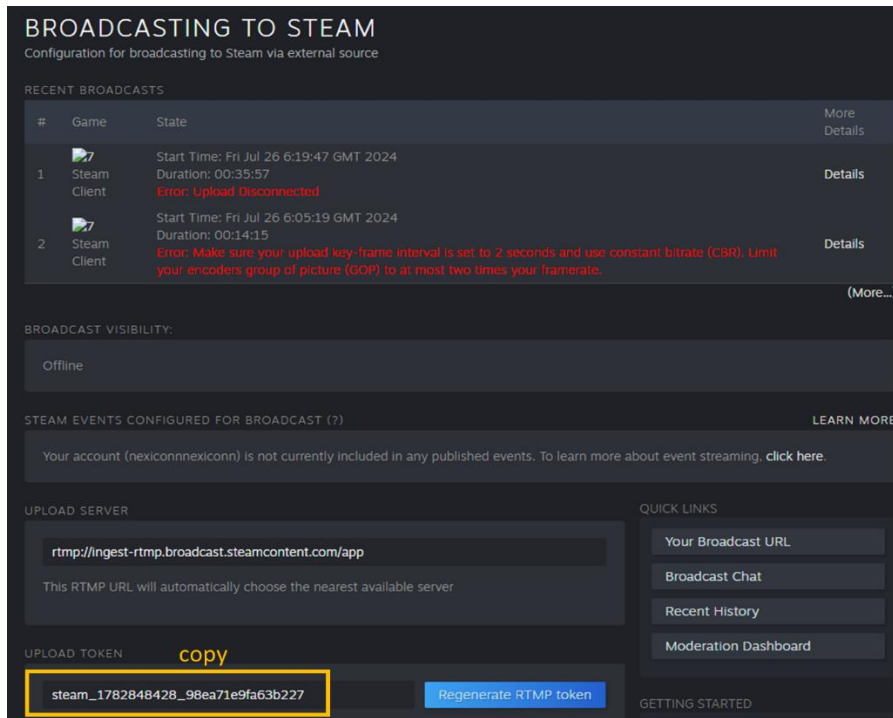


9. Click "Stop Streaming" to end your live streaming.

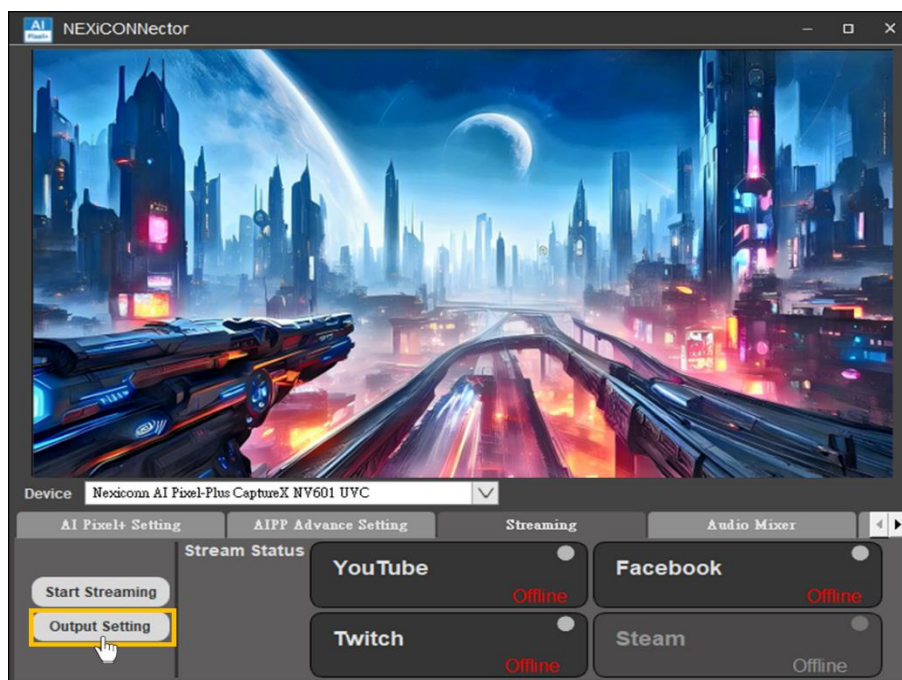


How to live stream on Steam

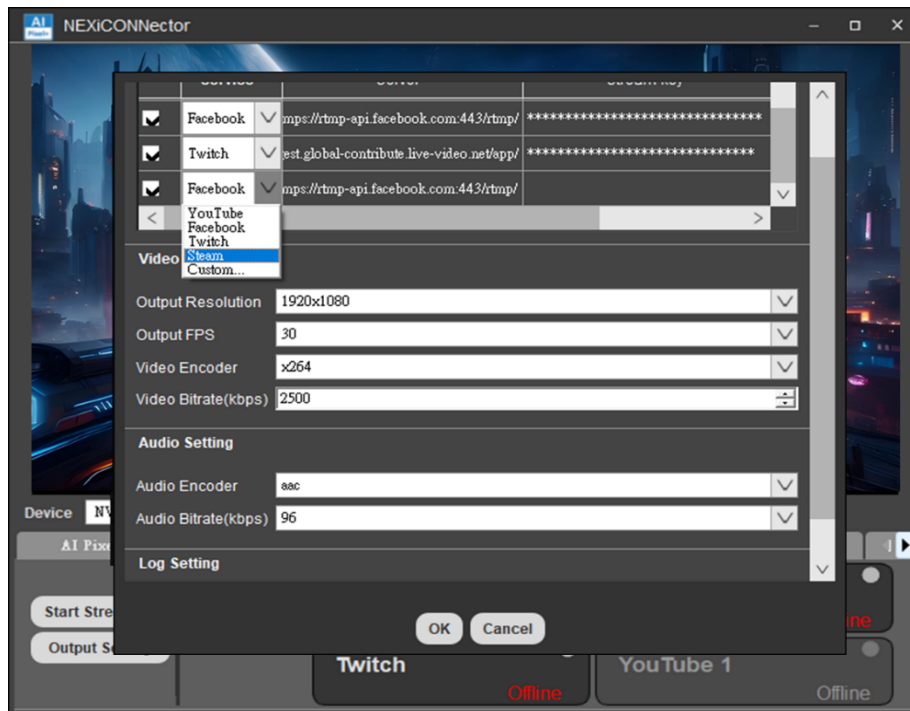
1. Copy the RTMP token from the Steam website.



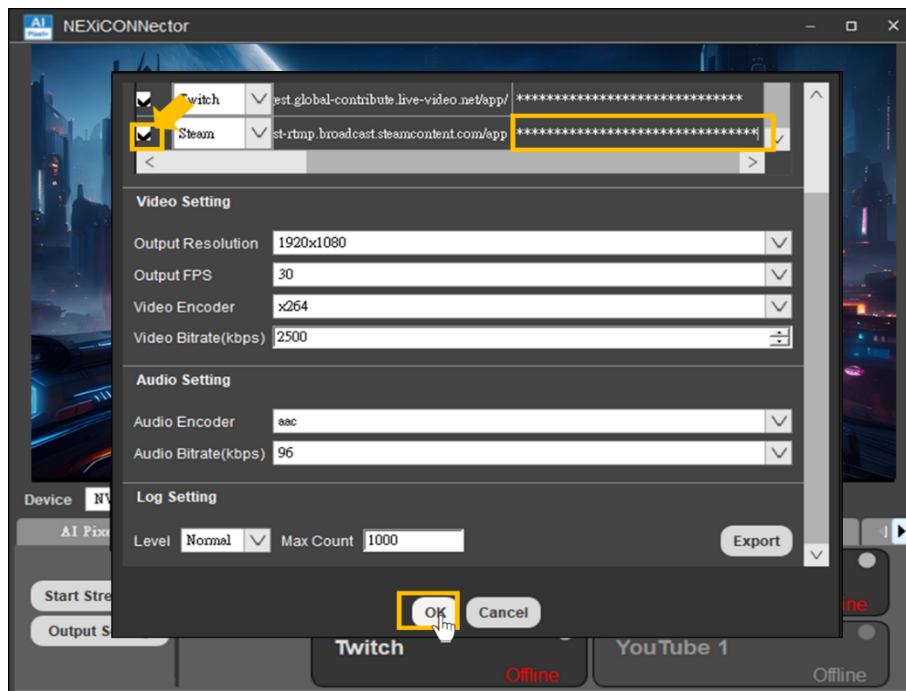
2. Launch NEXiCONNECTor, select the " Streaming" category and click the "Output Settings" button



3. Select "Steam" from the service list.



4. Click the box of "service", paste the stream key information you copied earlier and click "OK"



5. Click the "Start Streaming" button to start your live streaming.



6. Click "Stop Streaming" to end your live streaming.

